

CITY CRANE D12-10A



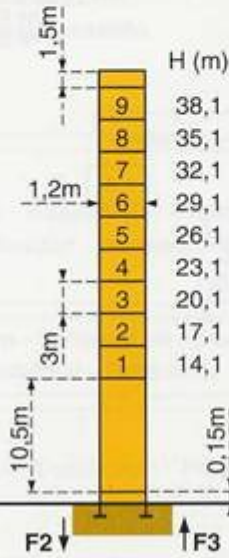
Mats - Maste - Masts - Mástil - Torre



□ 1,2m

Flèche - Ausleger - Jib
Flecha - Braccio
30m → 41m

PA 272



F2	● 57t	■ 80t
F3	● 42t	■ 65t

⊕	20t
---	-----

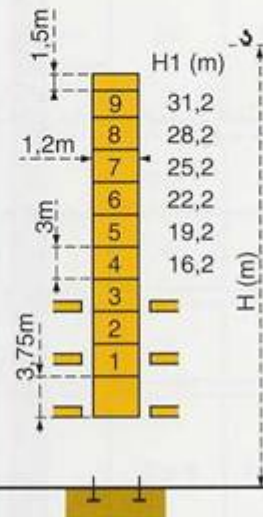
PA 273



F2	● 57t	■ 80t
F3	● 42t	■ 65t

⊕	20t
---	-----

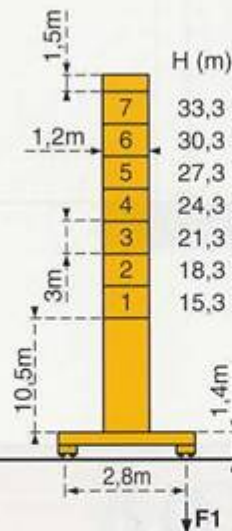
BA 25A



Voir ci-contre
Siehe nebenstehend
See opposite
Ver pagina opuesta
Vedi pagina accanto

ZH 263

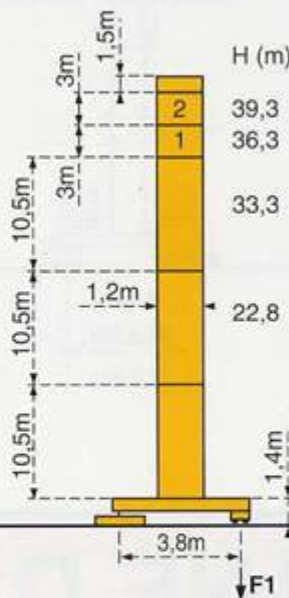
ZE 263



F1	● 39t	■ 45t
----	-------	-------

⊕	23t
---	-----

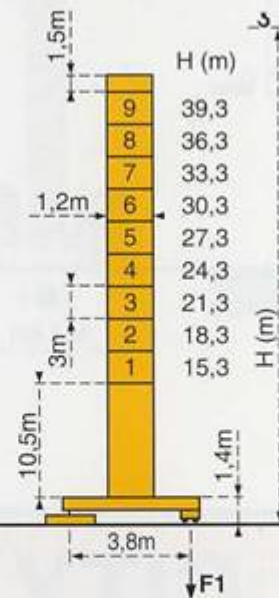
ZF 272



F1	● 37t	■ 49t
----	-------	-------

⊕	25,5t
---	-------

ZF 273



F1	● 37t	■ 49t
----	-------	-------

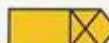
⊕	25,5t
---	-------

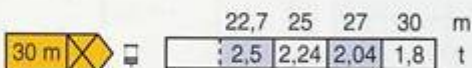
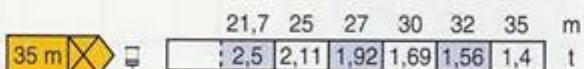
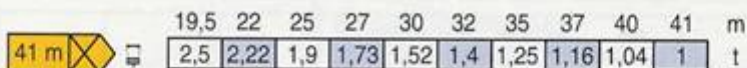
ZH 263

Uniquement version ③ - Nur Ausführung ③ - Only version ③ - Solamente version ③ - Solamente versione ③

F = Réactions - Eckdrücke - Reactions - Reacciones - Reazioni

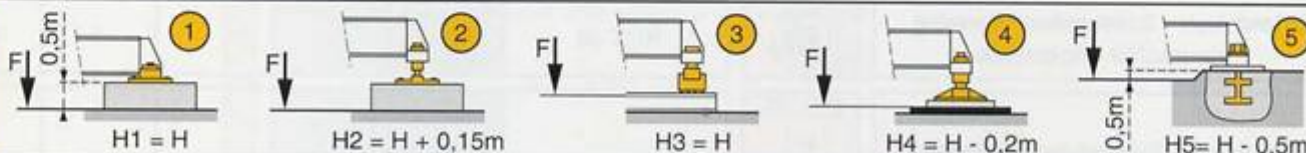
Courbes de charges - Lastkurven - Load diagrams - Curvas de cargas - Curve di carico

 Flèche Ausleger Jib Flecha Braccio

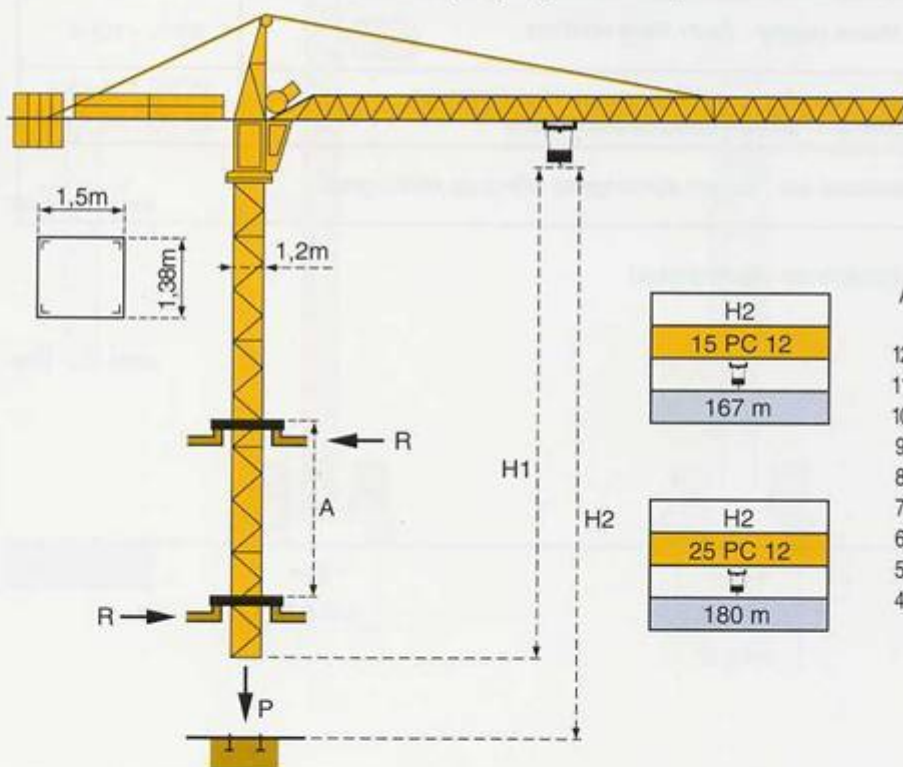


ZE

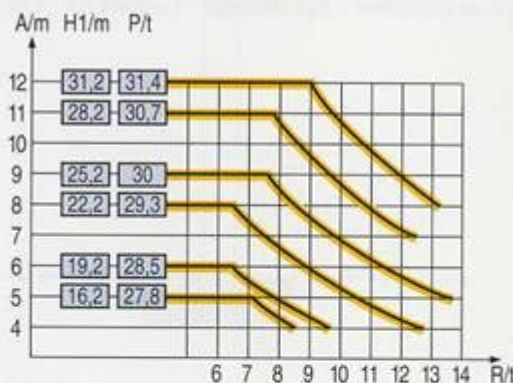
ZF



Télescopage sur dalles - Kletterkrane im Gebäude - Climbing crane Telescopage gruas trepadoras - Gru in cavedio



BA 25A



A Distance entre cadres
H1 Hauteur grue
P Poids de la grue (en service)
R Réaction horizontale

A Abstand zwischen den Rahmen
H1 Kranhöhe
P Krangewicht (in Betrieb)
R Horizontalkräfte

A Distance between collars
H1 Crane height
P Crane weight (in service)
R Horizontal reaction

A Distancia entre marcos
H1 Altura grúa
P Peso de la grúa (en servicio)
R Reaccion horizontal

A Distanza fra i telai
H1 Altezza gru
P Peso della gru (in servizio)
R Reazione orizzontale

■ En service
● Hors service

■ In Betrieb
● Ausser Betrieb

■ In service
● Out of service

■ En servicio
● Fuera de servicio

■ In servizio
● Fuori servizio

⊗ A vide sans lest avec flèche et hauteur maximum.















⊗ Ohne Last und Ballast mit Maximalausleger und Maximalhöhe.

⊗ Without load and ballast with longest jib and maximum height.

⊗ Sin carga, sin lastre con flecha y altura máximas.

⊗ A vuoto senza zavorra e con braccio massimo e altezza massima.

Mécanismes - Antriebe - Mechanisms - Mecanismos - Meccanismi

				m/min	t		ch -PS hp	kW
Levage Heben Hoisting Elevación Sollevamento	15 PC 12 	   	7	2,5	335 m	15	11	
			21	2,5				
			42	1,25				
	25 PC 12 	   	6	2,5	360 m	25	18,4	
			35	2,5				
			70	1,25				
Distribution - Katzfahren - Trolleying Distribución - Distribuzione		3 D1 V5	36			3	2,2	
		3 D2 V5 -1	21 - 42			3	2,2	
Orientation - Schwenken - Slewing Orientación - Rotazione		RCV 40	0 → 0,8 tr/min U/min-rpm			6	4,5	
Translation - Kranfahren - Travelling Traslación - Traslazione	ZE - ZF ZH 	TVD 324 C1	26			2 x 4	2 x 2,9	
Réseau - Netzstrom - Mains supply - Red - Rete elettrica							380V - 50Hz	
Puissance électrique nécessaire - Anschlusswert - Necessary electric power Potencia eléctrica necesaria - Potenza elettrica necessaria							15 PC : 25 KVA 25 PC : 35 KVA	
Groupe électrogène - Stromaggregat - Generator set - Grupo electrogeno - Gruppo elettrogeno							•	

*Nous consulter - Auf Anfrage - Consult us - Consultarnos - Consultateci

Conforme à la directive CEE 84/534 sur le niveau acoustique - Gemäss EWG-Richtlinie 84/534 Schall- Leistungspegel
 In compliance with the EEC 84/534 Instruction on noise level - Conforme con la direttiva CEE 84/534 sobre el nivel acustico
 Conforme colla direttiva CEE 84/534 sul livello acustico

NF E 52081 - 82

Copyright.Reproduction interdite © POTAIN 1992

POTAIN 

GRUPE LEGRIS INDUSTRIES

18.Rue de Charbonnières, B.P. 173-F 69132 ECULLY Cedex
 Tél. 72.20.20.20 - Télex 375 213 - Fax 72.20.20.00

POTAIN GmbH Deutschland Tel : 06.105.704.0
 POTAIN U.K. Great Britain Tel : 0895.44.52.61
 Simma POTAIN Italia Tel : 02.97.96.71
 POTAIN Portugal Portugal Tel : 02.968.08.89

CITY CRANE D12-10A

Réf. 1992.16 LFC 1