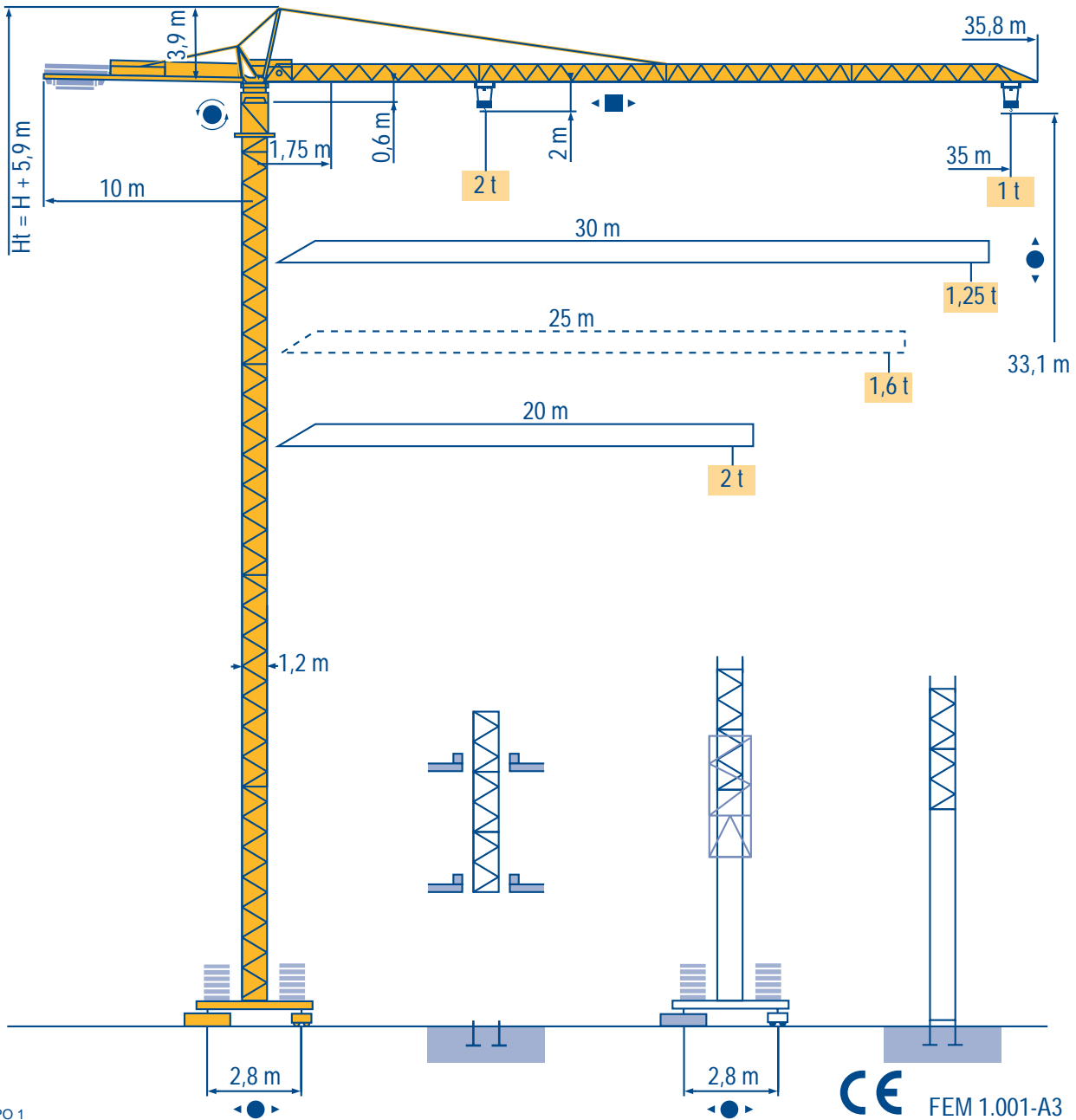


CITY CRANE MC 45 A



HD



HDT



GTMR



CITY CRANE



TOPKIT MD



MR



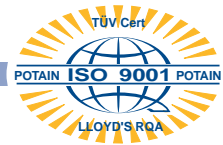
MAXI MD



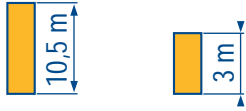
MAXI TOPKIT



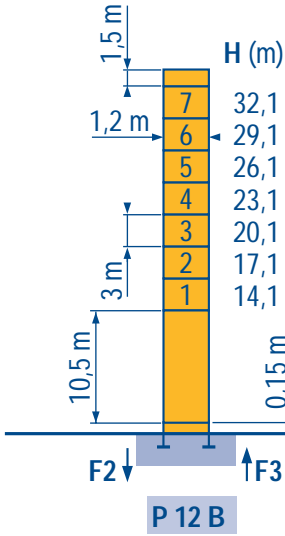
CE FEM 1.001-A3



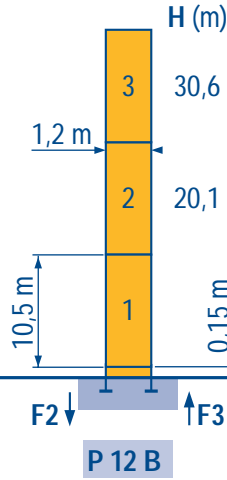
POTAIN



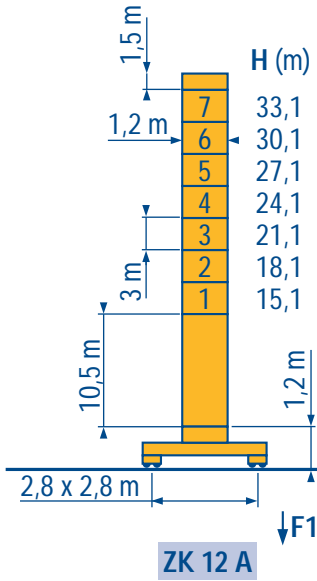
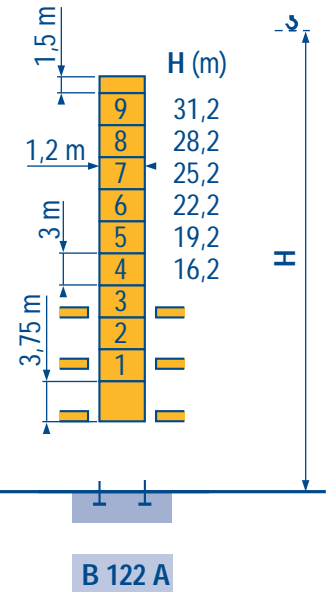
20 m → 35 m



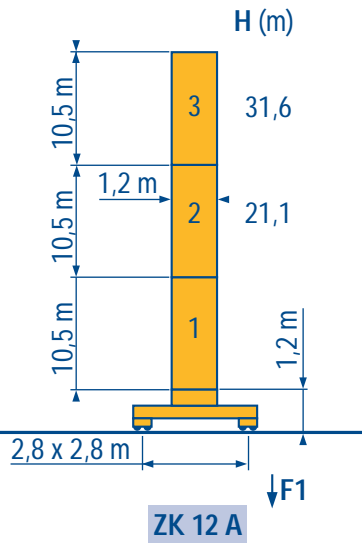
F2	● 40 t	■ 55 t
F3	● 29 t	■ 46 t
Person	14 t	



F2	● 36 t	■ 44 t
F3	● 27 t	■ 36 t
Person	11 t	

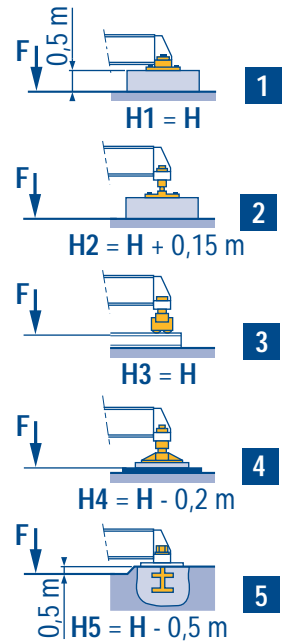


F1	● 33 t	■ 45 t
Person	17 t	



F1	● 29 t	■ 36 t
Person	14 t	

ZK



Voir télescopage sur dalles
Réactions en service
Réactions hors service
A vide sans lest avec flèche et hauteur maximum.

F See climbing crane
Reactions in service
Reactions out of service
Without load and ballast with longest jib and maximum height.

GB Consultare gru in cavedio
Reazioni in servizio
Reazioni fuori servizio
A vuoto senza zavorra e con braccio massimo e altezza massima.

Siehe Kletterkrane im Gebäude
Reaktionskräfte in Betrieb
Reaktionskräfte außer Betrieb
Ohne Last und Ballast mit Maximalausleger und Maximalhöhe.

D Veá grúa trepadora
Reacciones en servicio
Reacciones fuera de servicio
Sin carga, sin lastre con flecha y altura máxima.

E 見楼板顶升
工作状态下的反应
非工作状态下的反应
空载, 无配重, 起重臂和高度均为最大值

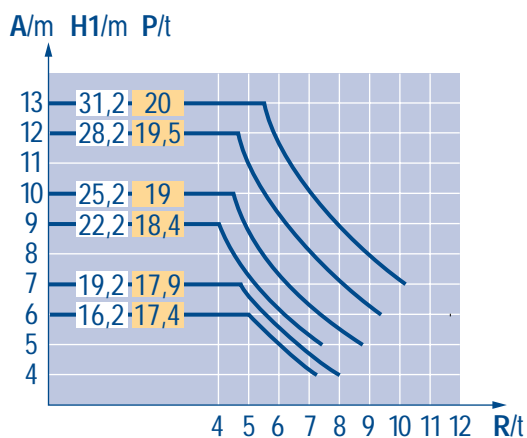
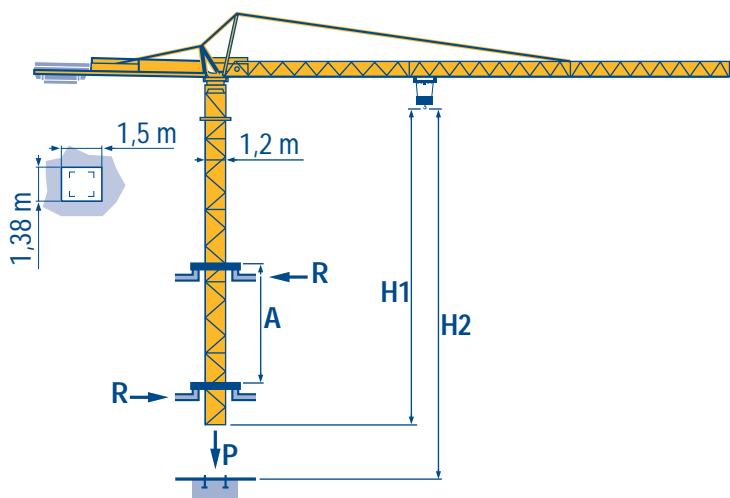
35 m	1,75 ▶	19,82	22	25	27	30	32	35 m
		2	1,77	1,52	1,39	1,22	1,12	1 t
30 m	1,75 ▶	20,28	22	25	27	30 m		
		2	1,82	1,56	1,42	1,25 t		
25 m	1,75 ▶	20,7	22	25 m				
		2	1,86	1,6 t				
20 m	1,75 ▶	20 m						
		2 t						

Télescopage sur dalles
Kletterkrane im Gebäude

Climbing crane
Telescopage gruas trepadoras

Gru in cavedio
楼板上顶升

B 122 A



A Distance entre cadres
H1 Hauteur grue
P Poids de la grue (en service)
R Réaction horizontale












Distance between collars
Crane height
Crane weight (in service)
Horizontal reaction



Distanza fra i telai
Altezza gru
Peso della gru (in servizio)
Reazione orizzontale

A Abstand zwischen den Rahmen
H1 Kranhöhe
P Krangewicht (in Betrieb)
R Horizontalkräfte













Distancia entra marcos
Altura grúa
Peso de la grúa (en servicio)
Reaccion horizontal

各附着框之间距离
工作状态下塔机高度
工作状态下塔机重量
水平反力

					ch - PS hp	kW		
	9 RPC 10	m/min	6,5	20	40	8,2	6	76 m > 76 
		t	2	2	1			
	15 PC 10	m/min	9	27	54	15	11	140 m > 140 
		t	2	2	1			
	1 D2 V1	m/min	18 - 36			1,2	0,9	
	RCV	tr/min U/min rpm	0 → 0,8			4	3	
	TVD 324 C1	m/min	26			2 x 4	2 x 2,9	

CEI 38 	IEC 38	kVA	
400 V (+6% -10%) 50 Hz		9 PC : 15 kVA 15 PC : 25 kVA	84/534 - 87/405

LPO 1

     	Levage Distribution Orientation Translation Conforme aux directives CEE 84/534 et 87/405 sur le niveau acoustique Nous consulter	F	Hoisting Trolleying Slewing Travelling In compliance with the EEC 84/534 and 87/405 Instructions on noise level Consult us	GB	Sollevamento Distribuzione Rotazione Traslazione Conforme alle direttive CEE 84/534 e 87/405 sul livello acustico Consultateci	I
     	Heben Katzfahren Schwenken Kranfahren Gemäss EWG-Richtlinien 84/534 und 87/405 für den Schall-Leistungspegel Auf Anfrage	D	Elevación Distribución Orientación Traslación Conforme con las directivas CEE 84/534 y 87/405 sobre el nivel acustico Consultarnos	E	起升 变幅 回转 行走 符合 CEE 84/534 - CEE 87/405 声晌度规定 请向我方咨询	C

POTAIN 
GROUPE LEGRIS INDUSTRIES

18.Rue de Charbonnières, B.P. 173-F
69132 ECULLY Cedex
Tél. (33)04.72.20.20.20
Fax (33)04.72.20.20.00
http://www.potain.fr
E-mail : mkt@potain.fr

CITY CRANE MC 45 A

Copyright.Reproduction interdite © POTAIN 1997

Deutschland
POTAIN GmbH Tel : 06.105.704.0
Italia
POTAIN S.p.A. Tel : 039.65.631
China
Zhangjiagang POTAIN Tel : 520. 877.1451